

Top Grip	Page 2
Tread Plate	Page 3
Anodized Sheet	Page 5
Alucore	Page 6

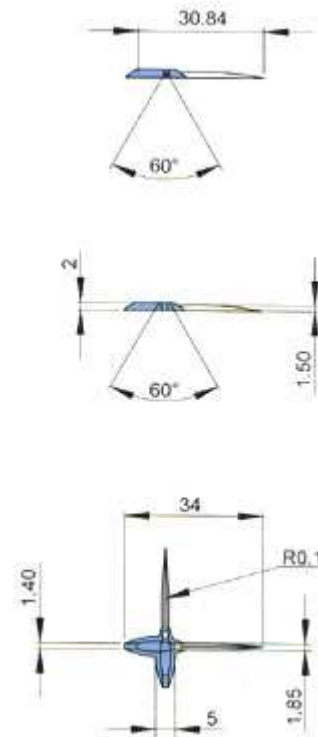
TOP-GRIP: THE NEW STANDARD IN ANTI-SLIP SAFETY



At a minimum, Topgrip guarantees adherence to the R11 safety standard and thus represents a unique safeguard every step of the way.

With the innovative criss-cross structure of the raised bar, even in extreme situations and under difficult conditions, the surface still offers the grip that is of vital importance to the emergency services and industrial workers.

Subject to the mode and gradient of installation, anti-slip safety of up to R13 standard can be achieved.



Dimensions **in stock**:

2000x1000x2,5 mm.
2000x1000x3,5 mm.
3000x1500x2,5 mm.



ALUMINIUM TREAD PLATE



Two bar checker plate:



Alloy : Magnealtok 30-ENAW 5754-H114
Sizes : 2000 x 1000 x 2,0-3,0-4,0-5,0 mm.
2500 x 1250 x 2,0-3,0-4,0-5,0 mm.
3000 x 1500 x 2,0-3,0-4,0-5,0 mm.



Five bar checker plate:



Alloy : Magnealtok 30-ENAW 5754-H114
Sizes : 2000 x 1000 x 2,0-3,0-4,0-5,0-6,0-8,0 mm.
2500 x 1250 x 2,0-3,0-4,0-5,0-6,0-8,0 mm.
3000 x 1500 x 2,0-3,0-4,0-5,0-6,0-8,0 mm.
4000 x 1500 x 4,0 -5,0 mm.
4000 x 2000 x 5,0 mm.

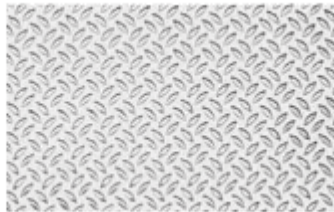


Rice grain tread plate:



Alloy : Magnealtok 30-ENAW 5754-H244
Sizes : 2500 x 1250 x 1,5 (2,00) mm.
2500 x 1250 x 2,0 (2,25) mm. *
2500 x 1250 x 2,5 (3,00) mm.

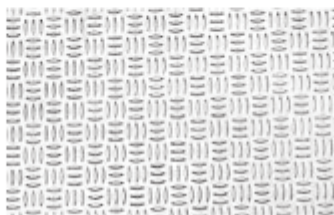
* Upon demand



Three small bar tread plate:



Alloy : Magnealtok 30- ENAW 5754-H22
Sizes : 2500 x1250 x 1,2 (1,4)



Diamond tread plate:



Alloy : Almanton 03-ENAW 3003
Sizes : 2000 x 1000 x 1,5



ANODIZED SHEET



Alloy: EN AW 5005 H24

Colors:

• **Matt silver:**

- Size: 2000x1000 mm., 2500x1250 mm., 3000x1500 mm.
- Thickness: 1, 1.5, 2, 2.5 and 3 mm.
- Anodizing: 10 or 15 μ

• **Matt gold and black:**

- Size: 2500x1250x1.5 mm.
- Anodized: 15 μ

Matt silver anodized sheet (one-sided) +PVC



Matt gold anodized sheet (one-sided) +PVC

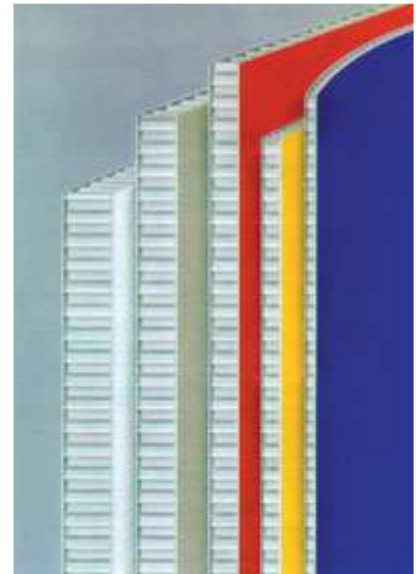


Matt black anodized sheet (one-sided) +PVC

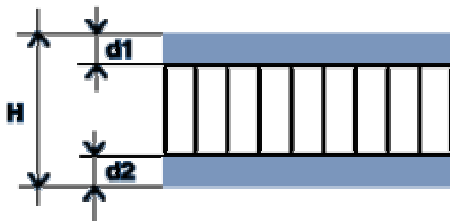


The aluminium honeycomb core endows the composite panel with an exceptionally high bending strength at an extremely low weight. In contrast to traditional honeycomb composites with brittle-hard bonding systems, the ALUCORE bonding system is tough and resilient yet features a high degree of elasticity. The advantages resulting there from are improved peel strength, higher damage tolerances and additional processing options, to name just a few.

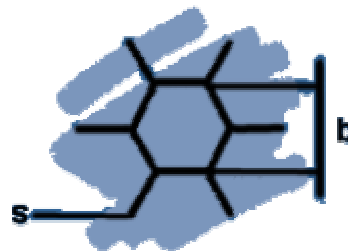
With all the advantages there are to an optimal system solution. ALUCORE is produced in a continuous manufacturing process, in which the core and the cover sheets already stove-lacquered are bonded. The result: This high-performance honeycomb composite can be produced in large contract quantities at short notice - making it an attractive proposition in terms of value for money. With its low weight and high weather resistance, ALUCORE ideally lends itself to indoor and outdoor applications. Numerous business sectors, such as architecture, industry, transport and display utilize the advantages of this highly versatile, fully recyclable aluminium honeycomb composite panel.



Structure



Core



H: Overall thickness
 d1: Al cover sheet thickness (front side)
 d2: Al cover sheet thickness (reverse side)

b: core size (ca. 6.3 - 12.7 mm)
 s: foil thickness (ca. 50 - 70µm)

Standard types (F = fascias and wall claddings, I = industrial applications)						
Typ	H	d1	d2	Weight per unit area	Rigidity*	Section modulus
F/I 06	6.0 mm	1.0 mm	0.5 mm	4.9 kg/m ²	0.71 kNm ² /m	2.6 cm ³ /m
F/I 10	10.0 mm	1.0 mm	0.5 mm	5.3 kg/m ²	2.19 kNm ² /m	4.6 cm ³ /m
F/I 15	15.0 mm	1.0 mm	1.0 mm	7.0 kg/m ²	7.55 kNm ² /m	14.0 cm ³ /m
F/I 20	20.0 mm	1.0 mm	1.0 mm	7.4 kg/m ²	13.90 kNm ² /m	19.0 cm ³ /m
F/I 25	25.0 mm	1.0 mm	1.0 mm	7.8 kg/m ²	22.17 kNm ² /m	24.0 cm ³ /m

*Rated values: $\nu=0,3$ (Poisson's ratio)